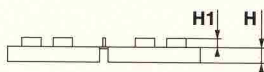
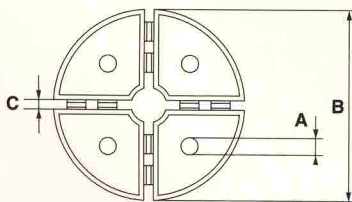
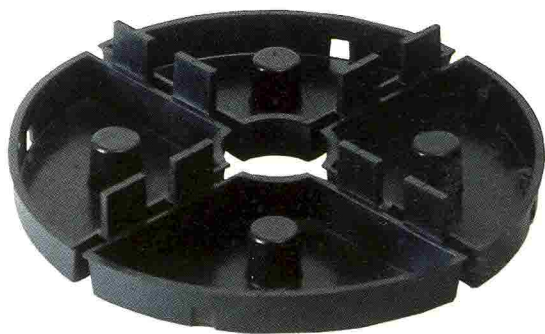


È un supporto che permette di costruire un pavimento isolato dal manto impermeabile trasformando coperture piane in terrazze, balconi, passaggi pedonali e parcheggi. Economico, di facile installazione, è resistente agli agenti atmosferici, non teme il gelo.

*A support which promotes a new paving system that transforms roof areas into properly drained, ventilated and elevated terraces, patios, balconies and walk-ways. Manufactured with high resistance plastic, it has been scientifically tested to withstand adverse atmospheric conditions. Cheap and easy to install.*



CODICE/CODE	A	B	C	H	H1
<b>E001015000</b>	13	145	3	14	13

Misura quadrato/Paving slab size	Quantità m <sup>2</sup> /Pieces per m <sup>2</sup>
cm. 50 x 50	4 Supporti/pcs
cm. 40 x 40	6,25 Supporti/pcs
Superficie d'appoggio cm <sup>2</sup> /Base support cm <sup>2</sup>	133